



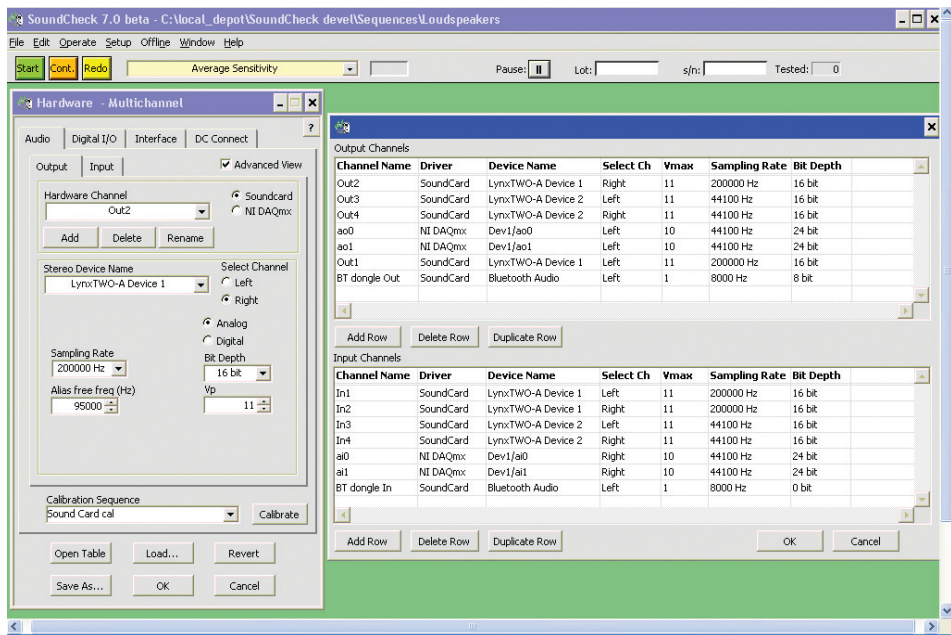
SoundCheck™ 7.0 New Features

Test Multichannel Devices or Multiple Devices Simultaneously

SoundCheck™ 7.0 features full multichannel acquisition. An unlimited number of channels enables you to use as many channels simultaneously as your hardware and computer memory can support.

This offers advantages for many types of testing including:

- **Production testing of surround sound electronics:**
all channels can be measured simultaneously, enabling an entire surround sound test to be carried out much faster.
- **Stereo headset testing:**
stereo acoustics and impedance can be measured simultaneously, increasing the speed of test.
- **Multichannel devices:**
Pro audio mixers and other multichannel devices can now be tested faster using SoundCheck.
- **Batch mode testing:**
Multiple channels can be utilized for batch-mode testing of multiple devices at once, such as microphones.



High-accuracy testing of audio electronics

SoundCheck 7.0's new multichannel capability also means that you can play and record on different devices (soundcards, or data acquisition devices). This enables a NI data acquisition card (such as the PXI/PCI 4461 and 4462) to be used in conjunction with a soundcard, combining the flexibility of a Windows Multimedia environment with the high accuracy of the NI hardware. SoundCheck communicates with Windows Multimedia devices in real time by sending WAV files. It is the only audio test system that offers complete control of Windows multimedia devices, making it the ideal solution for testing audio electronics and multimedia devices such as IP phones, MP3 players and Bluetooth headphones.

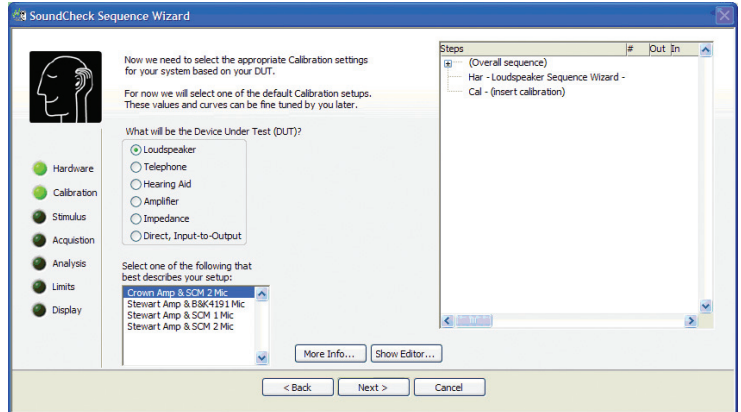


LISTEN^{INC}

SoundCheck™ 7.0 New Features (cont)

Sequence Wizard

The new sequence wizard walks you through the process of setting up a simple test so that you can get up and running with SoundCheck faster. Easy-to-follow instruction screens prompt you to select and calibrate input devices, choose your test signals, carry out the test, analyze the data and display the results. Set-up wizards are included for commonly tested devices including loudspeakers, telephones, hearing aids, amplifiers, and microphones. Tests that are created through the sequence wizard can be easily expanded and modified through the sequence editor.



Additional Enhancements

Improved Loose Particle Algorithm

SoundCheck 7.0 features a new loose particle algorithm which is less susceptible to background noise and is simpler to set up.

Improved Multitone Stimulus

The new multitone stimulus features optimized phase and FFT bin alignment. This industry-standard multitone signal offers additional flexibility.

New Post-Processing Algorithms

SoundCheck 7.0 features resampling and sampling rate correction for digital measurements. This allows compensation for sampling rate shifting, commonly found in low-cost consumer products (e.g. MP3 players, Bluetooth headsets and IP phones).

Improved FFT and Inverse FFT Algorithms

These improved algorithms allow you to easily post-process in either the time or the frequency domain, for example, when combining far-field and near-field measurements. This is particularly useful for examining the impulse response of a spliced loudspeaker measurement.

Instantly Find Peak Values in Spectrum Analyzer

The new time-saving "search for max." feature in the spectrum analyzer instantly finds the peak, making it much faster to find the harmonics without manually scanning.

Improved Message and Recall Steps

SoundCheck 7.0 can now run message, acquisition and recall steps independently of the sequence. This accelerates sequence development as individual steps can be tested with many different parameters until the optimum is found, without having to run the entire sequence each time.