



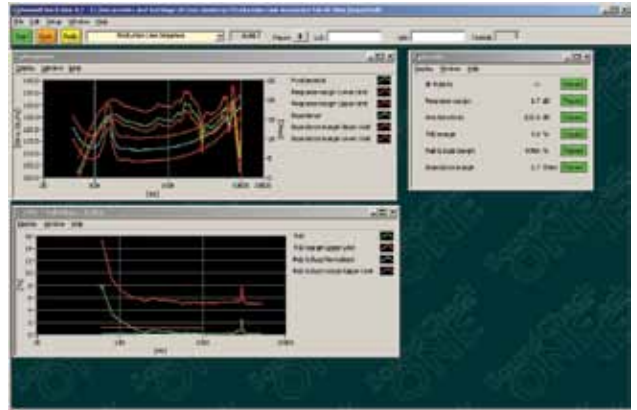
SoundCheck ONE™

The low cost production line loudspeaker and microphone test system from Listen, Inc.

ONE minute to set up... ONE second to test... ONE low price



SoundCheck ONE™ is a simple to use and cost-effective complete test system for production line measurement of loudspeakers and microphones. It consists of a simplified version of the popular SoundCheck® software package, integrated with Listen's AmpConnect hardware, a sound card, cables and an optional microphone.



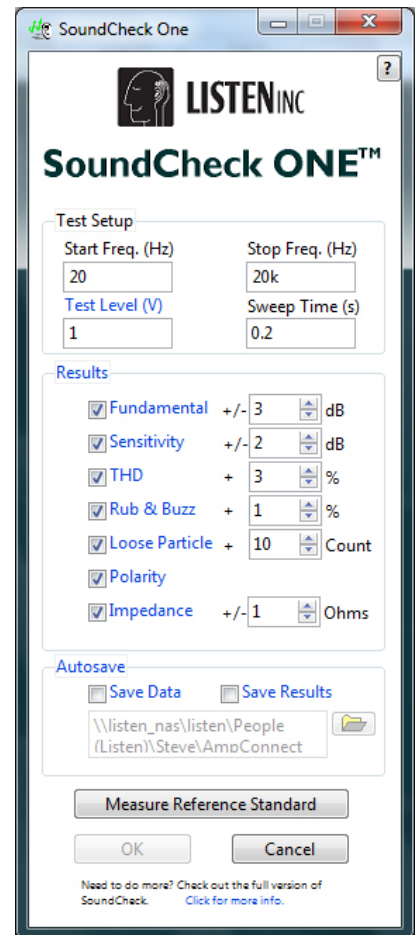
ONE minute to set up – simple, out of the box operation

Simplicity is the core of SoundCheck ONE's design. The software and hardware are designed to work together and the AmpConnect USB-controlled hardware box contains all the additional equipment you need for a complete audio test (microphone power supply, impedance box, amplifier, etc.)



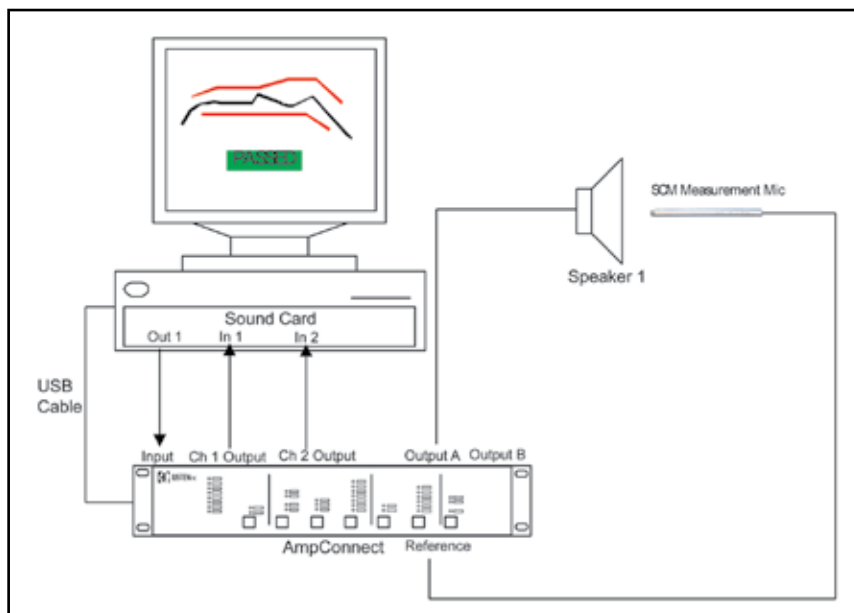
Set up is easy and takes less than a minute. Once the soundcard is installed in your computer and SoundCheck loaded, you simply need to connect your loudspeaker or microphone under test, the AmpConnect box, and your measurement microphone and customize your test using the sequence generator. This simple checkbox interface allows you to select individual tests, choose the start and stop frequency, set the test level and sweep time. Finally, measure the reference speaker or microphone by clicking the button in the sequence generator, and set your limits.

For simplicity, the version of SoundCheck supplied with this package runs only the pre-defined test sequences included with it, and will only operate with the supplied hardware. Custom test sequences cannot be developed. To simplify testing for your overseas manufacturers, a Chinese language version is also available.





SoundCheck ONE™ (cont.)



System Configuration for testing a loudspeaker with SoundCheck ONE™

Benefits

- Simple
- Fast
- Cost effective
- Accurate
- Chinese language option
- Upgradable

One second to test – fast, accurate measurements

It's not just set up that is fast – testing is too. SoundCheck ONE carries out a full loudspeaker test in just one second. This is because SoundCheck ONE uses the same engine as SoundCheck – a product with a 15 year history that is used on thousands of production lines around the world. SoundCheck's measurement algorithms are designed to meet the needs of high throughput production lines with special attention to speed, reliability and repeatability even in noisy environments.

One low price – cost effective

At less than \$6000 for a complete system including hardware, SoundCheck ONE is similarly priced to systems with far less sophisticated measurement methods. Although the interface is simple and the cost is low, it offers the same test speed, repeatability and reliability as the more expensive full version of SoundCheck.

Compatibility and Flexibility

Unlike other comparably priced systems, should you need more flexibility in the future, the software supplied in the SoundCheck ONE package can be upgraded to a full version of SoundCheck – all the hardware supplied is fully compatible. This guarantees that even if your testing needs expand, your initial investment is not wasted.

For companies who own copies of SoundCheck ONE as well as the full version of SoundCheck, SoundCheck can be enabled to also operate in SoundCheck ONE at no extra cost for test development purposes. SoundCheck ONE sequences and results may be opened and analyzed in SoundCheck 8.2, but may not subsequently be opened in SoundCheck ONE.

Further Information

Also see: AmpConnect™ Technical Specifications
DAL Card Delux technical specifications

Available options

Computer
SCM 2 measurement microphone