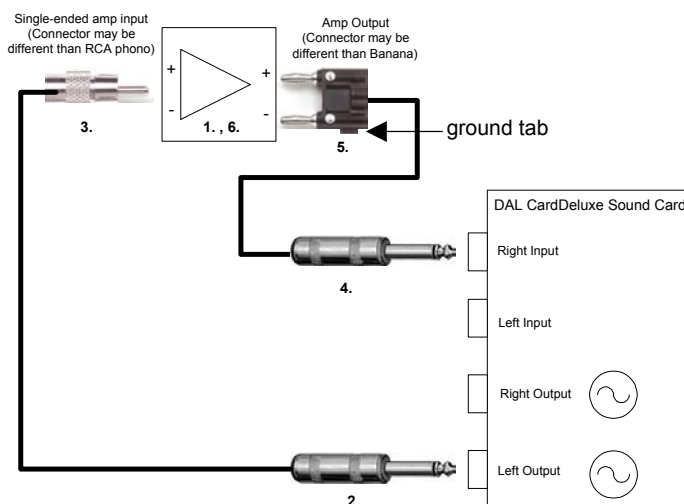


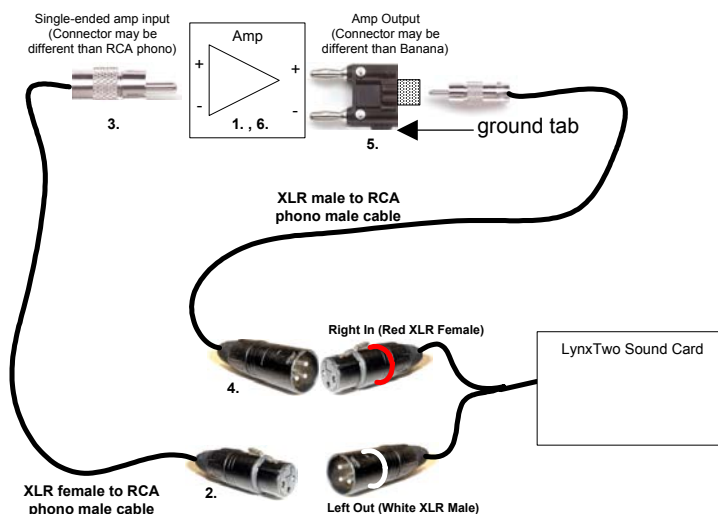
SoundCheck™ Quick Start Guide

Amplifier Calibration Connection Diagram using the DAL CardDeluxe



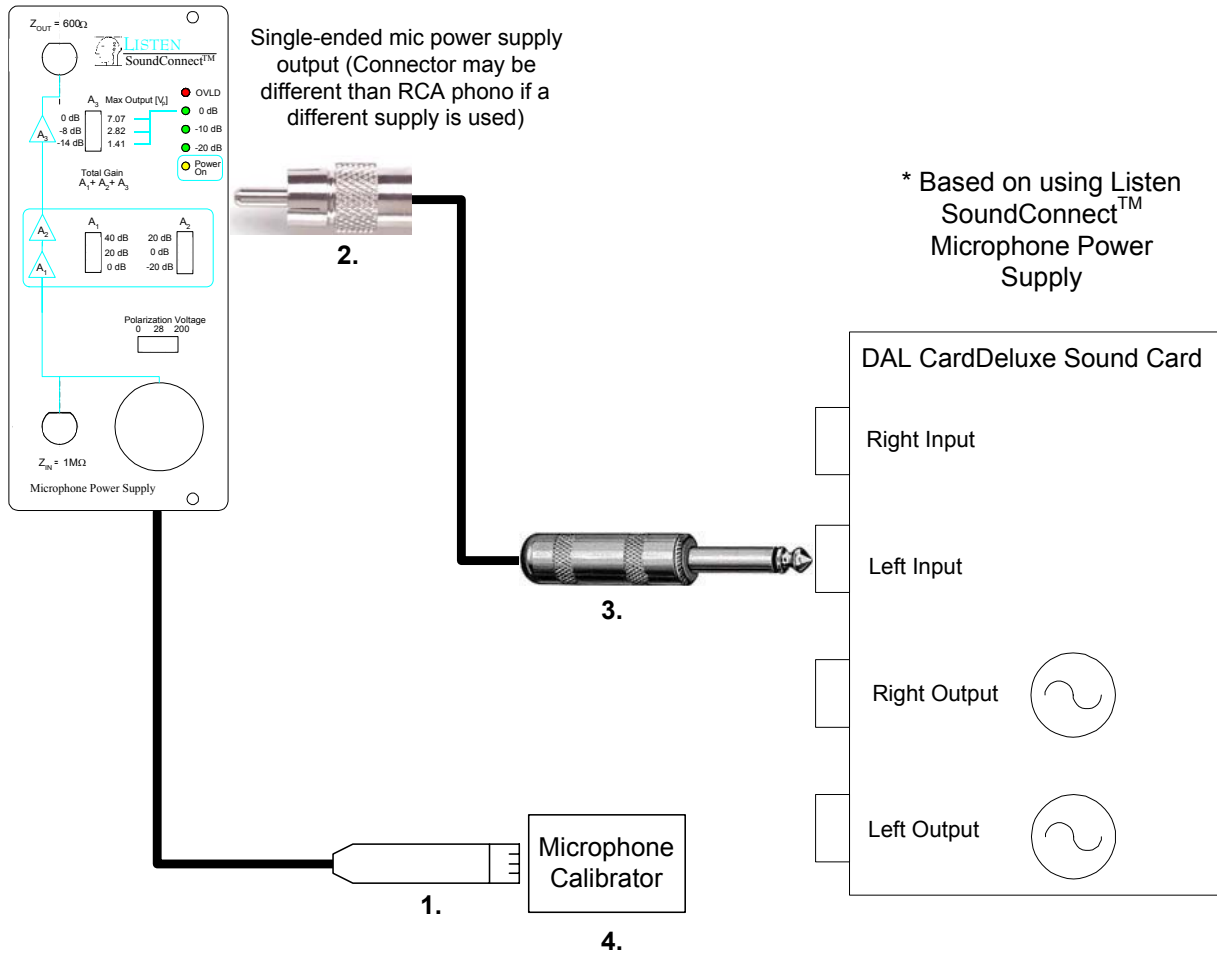
1. Make sure amplifier is OFF.
 2. Plug 1/4-inch jack into Left Out of sound card.
 3. Plug RCA phone (or other connector type appropriate for your amplifier) to amplifier input channel.
 4. Plug 1/4-inch jack into Right In of sound card.
 5. Plug Banana connector (or other connector type appropriate for your amplifier) to amplifier output channel.
- NOTE: The ground of the adapter must be connected to the amplifier minus (-) connection or a "loop" condition will occur that could result in damage to the amp and sound card.*
6. Turn amplifier ON.
 7. Press "Calibrate" button in Calibration Editor to calibrate amplifier.
 8. After calibration is successful, click Save As to save new amplifier gain settings to disk or close Calibration Editor and click File -> Save to save the entire sequence.

Amplifier Calibration Connection Diagram using LynxTwo Multi-channel Sound Card



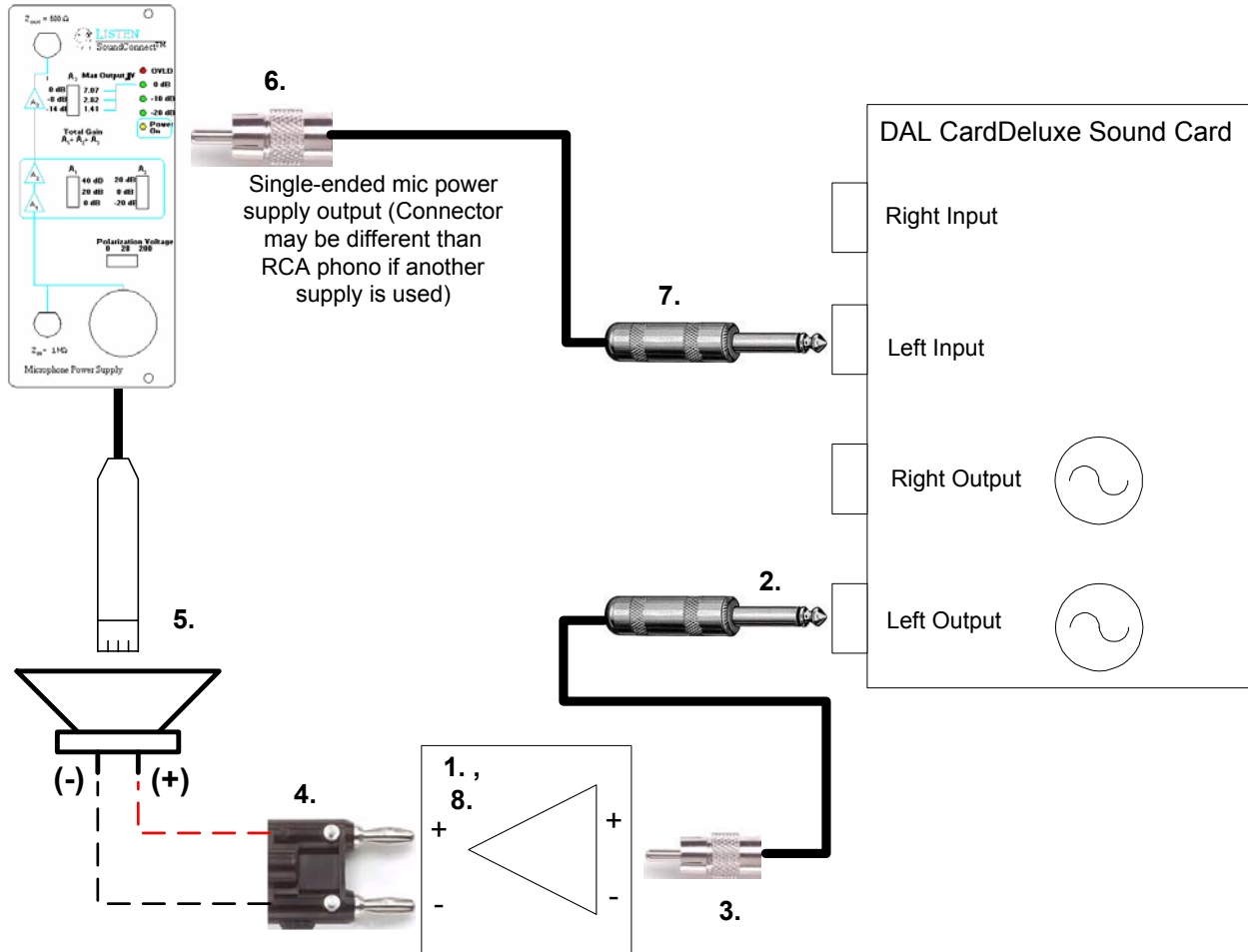
1. Make sure amplifier is OFF.
 2. Plug XLR female into CH1 Out (White XLR Male).
 3. Plug RCA phono (or other connector type appropriate for your amplifier) to amplifier input channel.
 4. Plug XLR male into CH2 In (Red XLR Female).
 5. Plug Banana-to-RCA female connector to amplifier output channel.
- NOTE: The ground of the adapter must be connected to the amplifier minus (-) connection or a "loop" condition will occur that could result in damage to the amp and sound card.*
6. Turn amplifier ON.
 7. Press "Calibrate" button in Calibration Editor to calibrate amplifier.
 8. After calibration is successful, click Save As to save new amplifier gain settings to disk or close Calibration Editor and click File -> Save to save the entire sequence.

Microphone Calibration Connection Diagram Using SoundConnect™ *



1. Plug microphone into front of SoundConnect. Make sure appropriate polarization voltage is selected.
2. Plug RCA phono (or other connector type appropriate for your power supply) to output connector on back of SoundConnect.
3. Plug 1/4-inch jack into Left In of sound card.
4. Insert microphone into calibrator and turn it on.
5. Press "Calibrate" button in Input section of Calibration Editor to calibrate microphone. Make sure units are V/Pa and dB re 20 μ .
6. After calibration is successful, click Save As to save new microphone gain settings to disk or close Calibration Editor and click File -> Save to save the entire sequence.

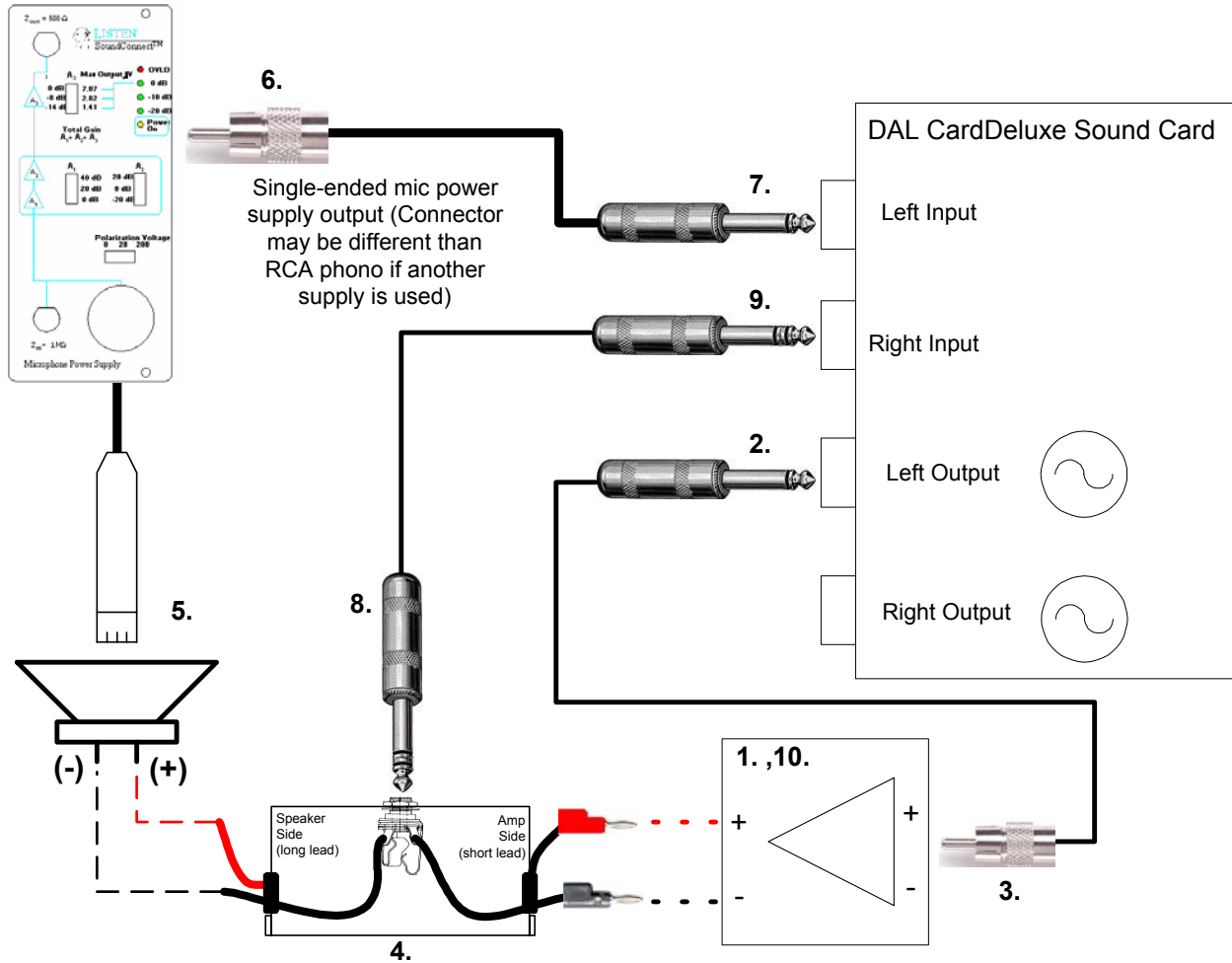
Loudspeaker Test Connection Diagram



1. Make sure amplifier is OFF before connecting any cables.
2. Plug 1/4-inch jack into Left Out of sound card.
3. Plug RCA phone (or other connector type appropriate for your amplifier) to amplifier input channel.
4. Plug the Banana connector (or other connector type appropriate for your amplifier) to amplifier output channel and then connect to loudspeaker.
5. Plug microphone into front of SoundConnect. Make sure appropriate polarization voltage is selected and mic has been calibrated.
6. Plug RCA phono (or other connector type appropriate for your power supply) to output connector on back of SoundConnect.
7. Plug 1/4-inch jack into Left In of sound card. Make sure mic power supply is ON.
8. Turn amplifier ON. You are now ready to run your loudspeaker test sequence. Turn amplifier OFF before shutting down PC.

NOTE: If a footswitch has been supplied, plug it into the computer's COM port (DB9 connector on back of PC). Make sure that the hardware step in the sequence(s) you choose to run have the footswitch enabled. Refer to section on Hardware Editor in SoundCheck manual. Make sure that Hardware Type "External Interface" is chosen and the selected interface is "Footswitch". NI VISA *must* be installed on your PC for the footswitch to operate properly. If Listen has supplied the PC, NI VISA will already be installed. If Listen did not supply the PC, NI VISA will be installed during the SoundCheck installation process. You can always reinstall NI VISA by inserting the SoundCheck CD-ROM.

Loudspeaker Test Connection Diagram with Impedance Box



1. Make sure amplifier* is OFF before connecting any cables.
2. Plug 1/4-inch jack into Left Out of sound card.
3. Plug RCA phone (or other connector type appropriate for your amplifier) to amplifier input channel.
4. Plug Impedance Box banana connectors to amplifier output channel and then connect Impedance Box long leads to loudspeaker.
5. Plug microphone into front of SoundConnect. Make sure appropriate polarization voltage is selected and mic has been calibrated.
6. Plug RCA phono (or other connector type appropriate for your power supply) to output connector on back of SoundConnect.
7. Plug 1/4-inch jack into Left In of sound card. Make sure mic power supply is ON.
8. Plug Tip-Ring-Sleeve (TRS) 1/4-inch jack into Impedance Box.
9. Plug TRS 1/4-jack into Right In of sound card.
10. Turn amplifier ON. You are now ready to run your loudspeaker test sequence. Turn amplifier OFF before shutting down PC to avoid unwanted transients from potentially damaging loudspeaker.

* Amplifier should be calibrated before making any measurements. Refer to SoundCheck™ instruction manual for details.