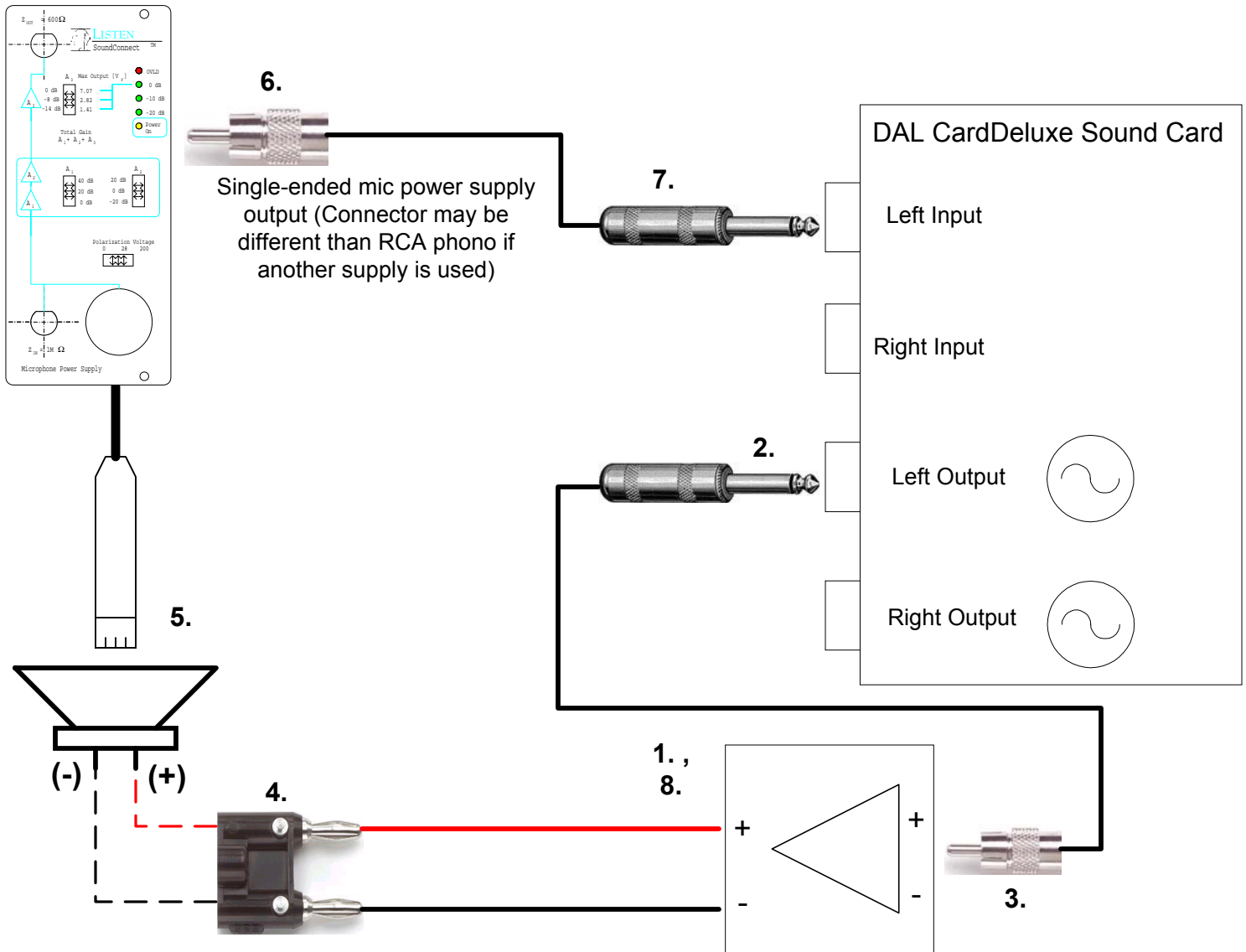


# Loudspeaker Test Connection Diagram



1. Make sure amplifier\* is OFF before connecting any cables.
2. Plug 1/4-inch jack into Left Out of sound card.
3. Plug RCA phono (or other connector type appropriate for your amplifier) to amplifier input channel.
4. Plug Banana connector (or other connector type appropriate for your amplifier) to amplifier output channel and then connect to loudspeaker.
5. Plug microphone into front of SoundConnect. Make sure appropriate polarization voltage is selected and mic has been calibrated.
6. Plug RCA phono (or other connector type appropriate for your power supply) to output connector on back of SoundConnect.
7. Plug 1/4-inch jack into Left In of sound card. Make sure mic power supply is ON.
8. Turn amplifier ON. You are now ready to run your loudspeaker test sequence. Turn amplifier OFF before shutting down PC.

\* Amplifier should be calibrated before making any measurements. Refer to SoundCheck™ instruction manual for details.