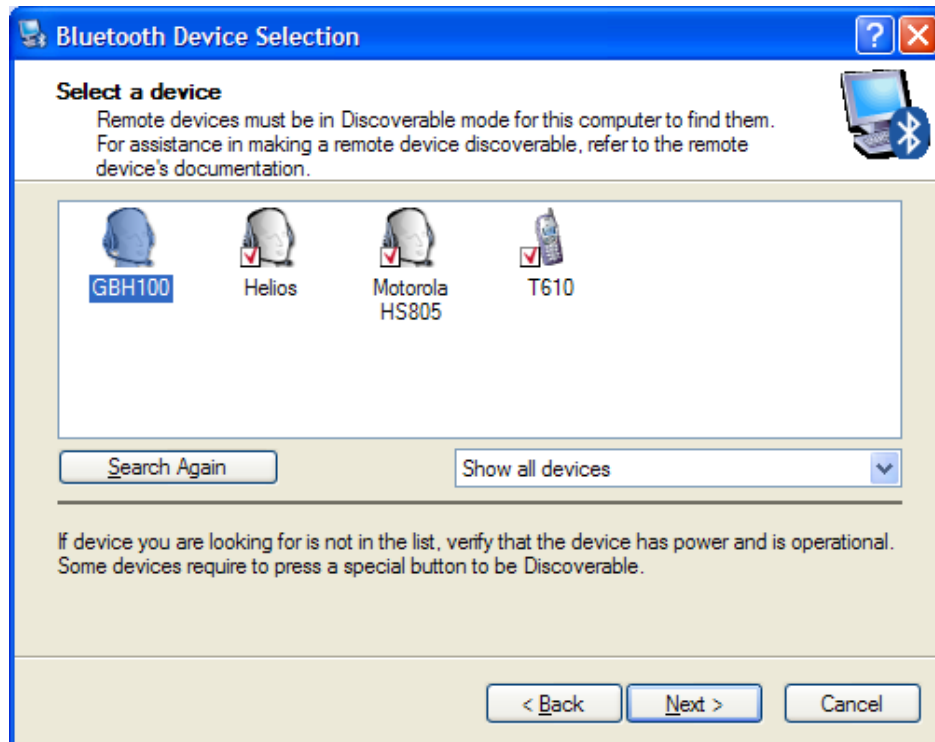


## Testing Bluetooth Headsets using SoundCheck™

Built into Windows XP is a Bluetooth Connection wizard. You will need a computer with a Bluetooth Audio Gateway and headset profile built-in (typically found on laptops nowadays) or you can buy a USB to Bluetooth wireless adaptor or “dongle” like the D-Link DBT-120 [www.dlink.com/products/?pid=34](http://www.dlink.com/products/?pid=34) . Once you have connected your Bluetooth dongle, run the Bluetooth Setup Wizard.

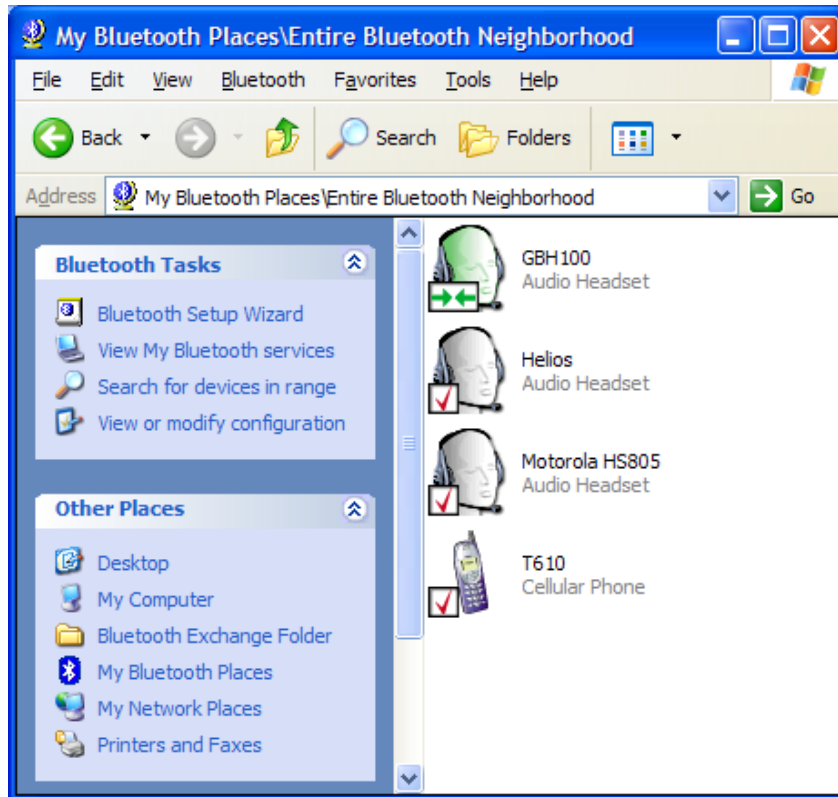


It will search for all Bluetooth devices within range (including cell phones with Bluetooth built-in). Before searching, put the Bluetooth headset in pairing mode by holding down the headset ON button for at least 10 seconds until it starts flashing rapidly (make sure the headset is off before you turn it ON for pairing).

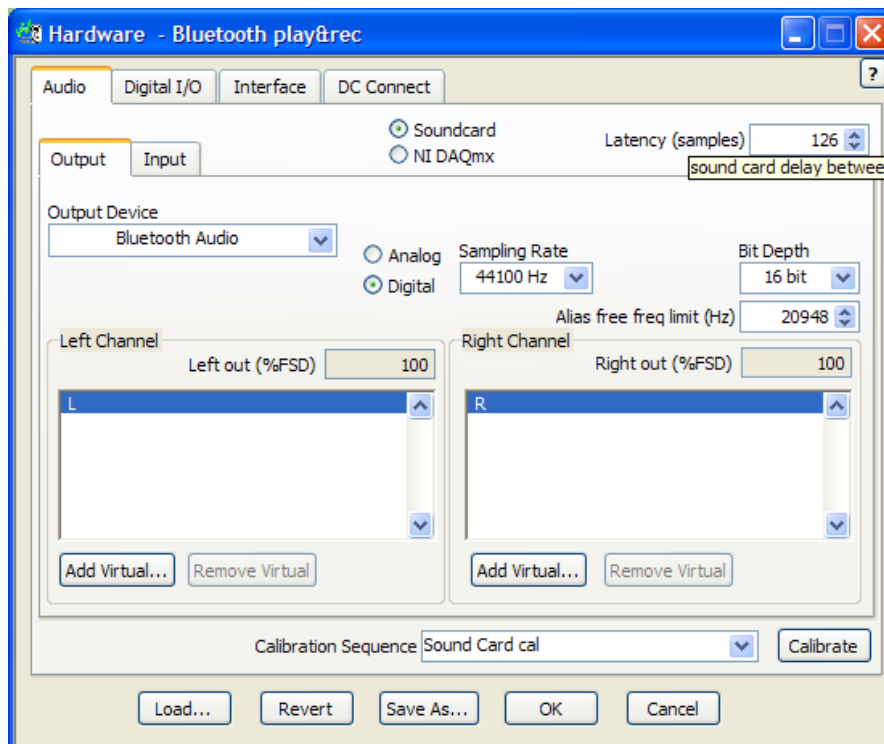


Select the Bluetooth headset that you want to connect to (you can only connect to one device at a time). Enter the PIN Code for pairing (typically 0000). Then right click on the "Audio Headset" and select connect. The Bluetooth headset should repeatedly emit three short beeps in ascending level. Push the ON button one more time briefly to "answer the call" from your computer.





The last step is to select “Bluetooth Audio” as the Output or Input Device in SoundCheck’s Hardware Editor. If you are using an USB headset, select it from the list instead. Make sure to select “Digital” instead of Analog interface because Windows will be sending and receiving wireless audio data from the Bluetooth/USB headset digitally.



You are now ready to measure!

