

AudioConnect Installation

Important: As of SoundCheck 18, NI Visa is included in the macOS installer.

1. Connect AudioConnect to the SoundCheck computer with the USB cable provided. Drivers are included with the installation of SoundCheck. We recommend that you start with a new installation of SoundCheck, connect AudioConnect and power it on before opening SoundCheck. See **"Automatically Create Signal Paths"** below.
2. Open SoundCheck. The Setup Wizard will open and automatically recognize the AudioConnect as shown in **Figure 1**.
3. Select **"Setup New Hardware"** in the Setup Wizard. Select the expand button ► to the right of "Close" and select **"And Open Hardware Editor"**.
4. Select **Refresh** in the Hardware Editor **Audio** tab. Verify that the AudioConnect values have been loaded in the Hardware Editor as shown in **Figure 2**.

Select **"Cancel"** to close the editor.

"Automatically Create Signal Paths for Listen Devices"

This will automatically update AudioConnect Vp levels and add signal paths in the Calibration Editor when SoundCheck opens. This is On by default but may be disabled in **Main Screen > Edit > Preferences > Launch**. (See SoundCheck manual).

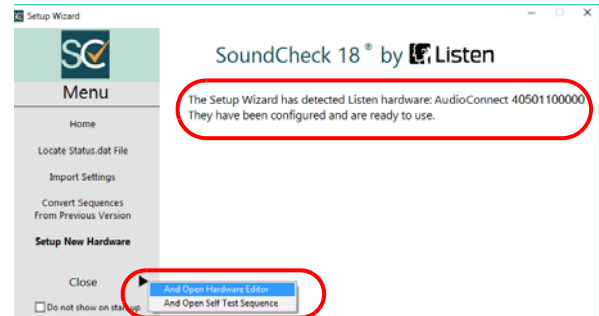


Figure 1: Setup Wizard

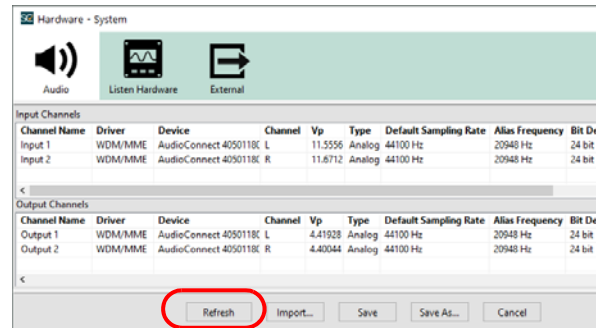


Figure 2: Hardware Editor

Note: AudioConnect only uses Windows WDM drivers. It is not compatible with WASAPI. Core Audio drivers are used in macOS.

Continue to next page

Self Test

The Self Test sequence verifies that the interface is properly connected and working with SoundCheck.

- From the SoundCheck Main Screen select:
File > Open > Sequences > Calibration > Self Test.sqc. SoundCheck opens the Calibration directory by default on the initial sequence selection.

(You may need to resize or move the sequence documentation PDF window if it covers the SoundCheck window.)

- Connect Line Out 1 to Line In 1 using a balanced 1/4" TRS to TRS Phone Plug cable as shown in [Figure 3](#). Repeat for channel 2.

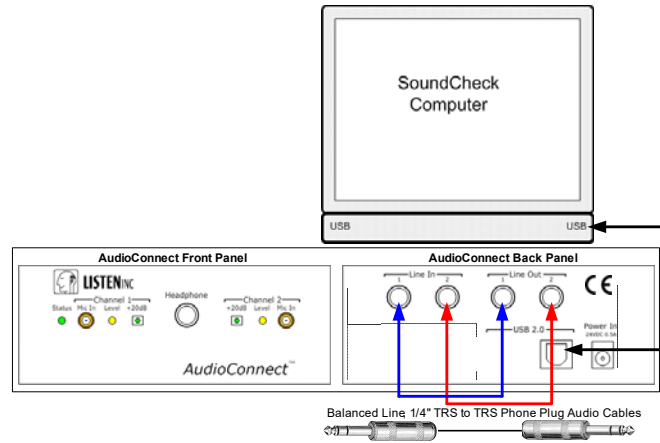


Figure 3: Self Test Wiring

Note: Balanced cables must be used since the default Vp values in the Hardware Editor are for balanced line connections.

- Open the AudioConnect Control Panel (**SoundCheck > Setup > Hardware > Listen Hardware Tab**) and right-click on the AudioConnect Device ID. Set Channel 1 and 2 to **Line In** as shown in [Figure 4](#). Select **Apply** to send the settings to AudioConnect and then select **Cancel** to return to the Startup Default settings.

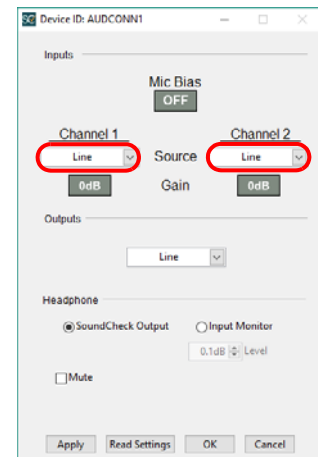

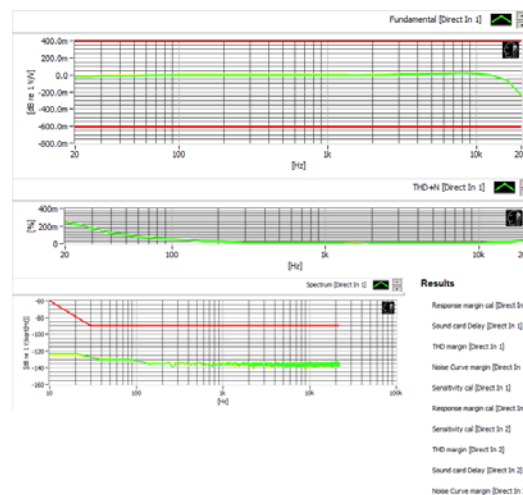


Figure 4: Line In

- Select the Green Arrow  to run the sequence. The sequence runs for approximately 40 seconds, and verifies that AudioConnect is connected and working properly.
- Open the AudioConnect Control Panel as shown in **Step 7** and select **Apply** to restore the Startup Default settings.

Note: AudioConnect uses WDM drivers which do not allow for stable latency. The Delay values will always show as a failure which is normal. This is why Auto Delay is required in Analysis Steps when using AudioConnect.



Ph 617-556-4104 • www.listeninc.com • support@listeninc.com

© Listen, Inc 2022. All rights reserved. SoundCheck® and AudioConnect™ are trademarks of Listen, Inc.

REV 082322