

#### AudioConnect 2 Installation

**Important:** AudioConnect 2 requires SoundCheck 21 or later.

**Important:** As of SoundCheck 18, NI Visa is included in the macOS installer.

1. Connect AudioConnect 2 to the SoundCheck computer with the USB cable provided. Drivers are included with the installation of SoundCheck. We recommend that you start with a new installation of SoundCheck, connect AudioConnect 2 and power it on before opening SoundCheck. See **“Automatically Create Signal Paths”** below.
2. Open SoundCheck. The Setup Wizard will open and automatically recognize the AudioConnect 2 as shown in [Figure 1](#).
3. Select **“Setup New Hardware”** in the Setup Wizard. Select the expand button ► to the right of **“Close”** and select **“And Open Hardware Editor”**.
4. Verify that the AudioConnect 2 values have been loaded in the Hardware Editor as shown in [Figure 2](#).

(Select **Refresh** only if switching between hardware devices. This will replace the current channel selections in the Hardware Editor to use the AudioConnect 2.)

Select **“Save”** to close the editor.

#### **“Automatically Create Signal Paths for Listen Devices”**

runs at startup to create signal paths in the Calibration Editor for any connected Listen Hardware.

This is enabled by default but may be disabled in **Main Screen > Edit > Preferences > Launch**. (See SoundCheck manual).

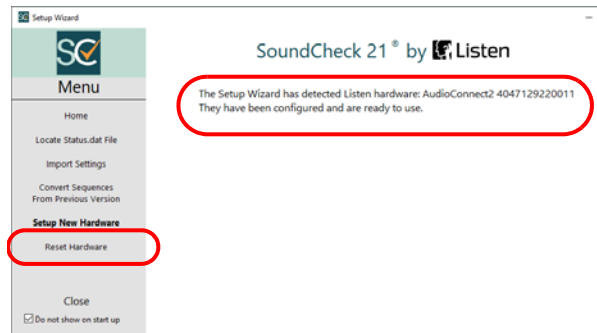


Figure 1: Setup Wizard

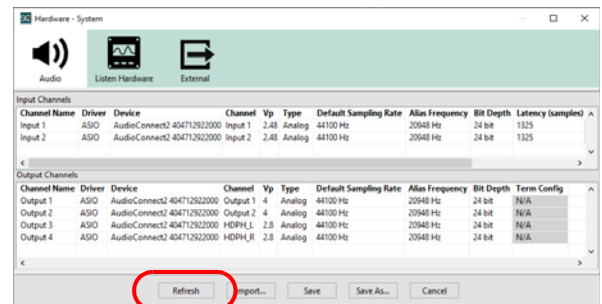


Figure 2: Hardware Editor

**Note:** The AudioConnect 2 default driver type for Windows is ASIO. WASAPI is also available. WDM drivers are not available. Core Audio drivers are used in macOS.

Continue to next page

## Self Test

The Self Test sequence verifies that the interface is properly connected and working with SoundCheck.

5. From the SoundCheck Main Screen select: **File > Open > Sequences > Calibration > AudioConnect 2 Self Test.sqc**. SoundCheck opens the Calibration directory by default on the initial sequence selection.

(Resize or move the sequence documentation PDF window if it covers the SoundCheck window.)

6. Self Test uses Direct in 1 & 2 and Direct Out 1 & 2 Signal paths. The default SoundCheck settings have these paths mapped to Hardware Editor Input and Output Channels 1 & 2.

7. The sequence automatically sets AudioConnect 2 to monitor the outputs (internal loopback) with a Message Step as shown in [Figure 4](#). No other connections are required.

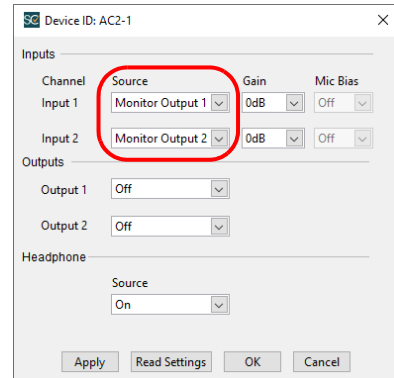



Figure 4: Monitor Outputs

8. Select the Green Arrow  to run the sequence. The sequence runs for approximately 40 seconds, and verifies that AudioConnect 2 is connected and working properly.

9. The sequence automatically returns AudioConnect 2 to factory default settings.

**Note: AudioConnect 2 uses ASIO drivers which allows for stable latency.**

**If using WASAPI drivers the Delay values may show as a failure which is normal. This is why Auto Delay is required in Analysis Steps when using AudioConnect 2 with WASAPI drivers.**

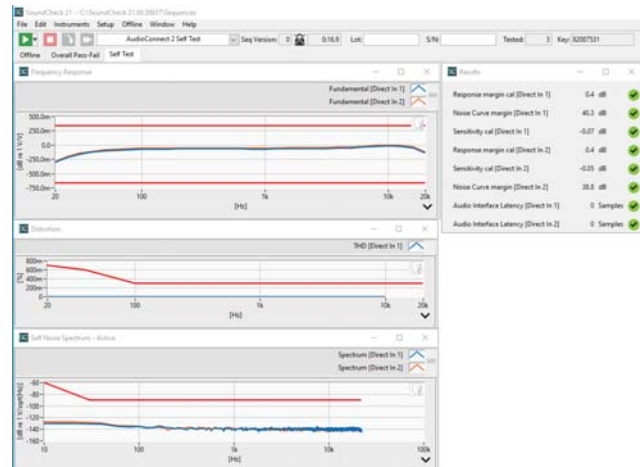


Figure 4: Self Test Results