

Software Installation

Important! Do not unplug the hardware key while SoundCheck is running. Doing so could destroy the hardware key.

1. Place the SoundCheck installation disc in the DVD-ROM drive of your computer.
 - If your computer is setup to “Auto Run”, you will be prompted to install the software
 - Or, start the software installation by running **Setup.exe** in the root of the Listen DVD-Rom
2. Follow the instructions on the screen. Click **Next** to proceed.
3. During installation, you will be prompted for the location of the *status.dat* file, which is unique to the hardware key.

For example, the file **status SC999999.dat** is automatically renamed to **status.dat** and then copied to the *SoundCheck 15.x\System* folder. The *status.dat* file is normally sent by email from Listen, Inc.

If the unique *status.dat* is lost, a new one can be sent by email.

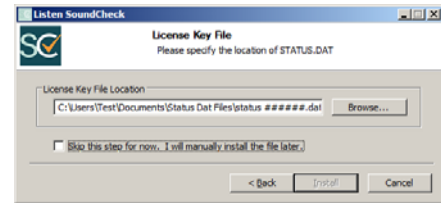


Figure 1: Status.dat File

Automatically Select Status.dat

If the *status.dat* path is pointed to a folder containing multiple *status.dat* files, the software will automatically load the one that corresponds to the currently plugged in hardware key.

Important! The file path for the Status file is part of the **Edit > Preferences > Folder Paths** setup. [See Status.dat File Path in the SoundCheck Manual.](#)

Demo Version

The SoundCheck 32 bit Demo version can be installed to preview the software without the hardware key. Select the SoundCheck 32 Bit installer. Then select “Skip Hardware Key and install 32-bit Demo” as shown in [Figure 2](#).

All data generated in the demo version is randomly adjusted in level and is therefore not valid. See [Demo Version in the SoundCheck Manual](#).

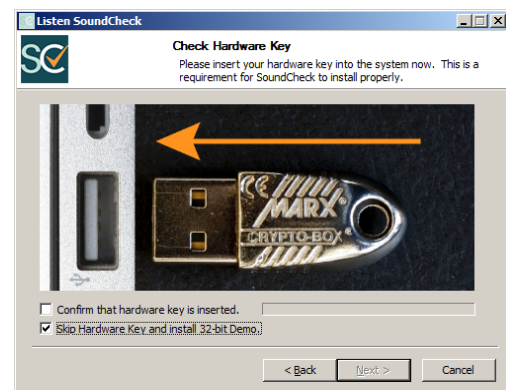


Figure 2: 32 Bit Demo Version

Hardware Key

As of SoundCheck 13 a new type of hardware key is required. This key is compatible with Windows 64 bit as well as 32 bit versions. Previous versions of SoundCheck will not work with this key.

The SoundCheck hardware key must be connected to the computer or SoundCheck will not open.

Hardware Key Installation

Insert the included hardware key into the USB port of the computer when prompted by the SoundCheck installation process. The computer will recognize the new hardware key automatically since the driver is included in SoundCheck.

We recommend that you follow proper anti-static procedures to avoid a static discharge when connecting the key to the computer. Ground yourself to the computer chassis (touch the case) before connecting the key to a USB port.



Note: If the USB key is moved from one USB port to another, the driver will automatically re-install for the new USB port.

Important! Do not lose the hardware key for the SoundCheck system. It unlocks the functionality of your SoundCheck software. For insurance purposes, this key represents the full value of your system and should be noted in your company's list of assets. We recommend that it be securely attached to the computer to avoid loss or theft.

Audio Interface Installation

Before starting SoundCheck, install the drivers for your audio interface. Always use the latest approved driver supplied by Listen. Drivers are available on the SoundCheck installation disk and on the website:

<https://support.listeninc.com/hc/en-us/sections/200370694-Drivers>

Listen hardware, such as, AmpConnect ISC™ and AudioConnect™ audio interface drivers are installed with SoundCheck. They will automatically be recognized by the Setup Wizard the first time SoundCheck runs. [See Setup Wizard on page 3.](#)

- Auto Mode is **On** by default when SoundCheck is installed
- Input and Output Vp values for these devices will automatically be updated if Auto Mode is selected in the Audio Page of the Hardware Editor. See [Auto Mode](#) in the SoundCheck Manual.

See [Audio Device System Settings in the SoundCheck Manual](#) for information on Windows settings important for use with audio devices.

If configuring a different audio interface for use with SoundCheck, see [Appendix A: Hardware Compatibility List in the SoundCheck Manual.](#)

Setup Wizard (Windows Only)

The Setup Wizard runs the first time SoundCheck runs. The wizard can also be run by clicking **File** on the SoundCheck Main Screen and selecting **Setup Wizard (Ctrl+Z)**.

- Click on the items in the Menu to select a function
- Check box for “Do not show on start up”
- Assists in setting up new hardware, including auto-detection of audio interface
- Allows you to transfer over sequences as well as hardware and calibration settings from previous versions of SoundCheck

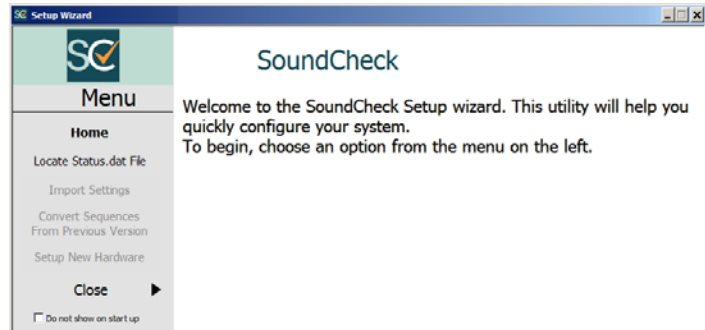


Figure 3: Setup Wizard Greeting

Locate Status.dat File

This allows you to navigate to the appropriate Status.dat file for your hardware key.

- The *status.dat* file is normally sent by email from Listen, Inc.

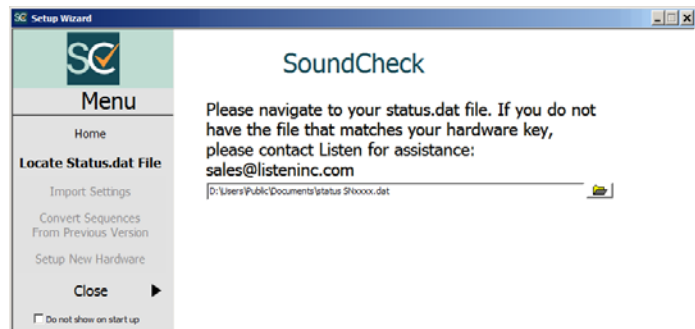


Figure 4: Locate Status.dat File

Import Settings

You can import Preferences as well as Hardware and Calibration setups from previous installations of SoundCheck.

- You will be prompted to choose if Signal Paths should be overwritten and then if Calibrated Device Files should be imported
- Select or ignore import of Preferences or Hardware/Calibration setups

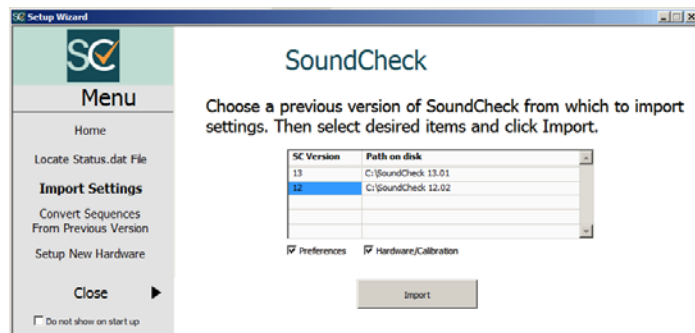


Figure 5: Import Settings

Convert Sequences From Previous Version

Right click to:

- Add a sequence or a directory of sequences to the list
- Remove a sequence from the list
- Clear the list
- Select the Destination Folder for the converted sequences
- Click **Convert**

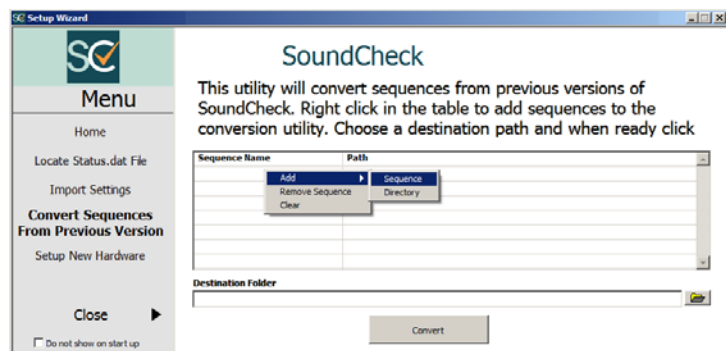


Figure 6: Convert Sequences

Setup New Hardware

You are prompted when new hardware is detected.

- When Auto Mode is enabled in the Hardware Editor, Listen Hardware will automatically update the Vp fields for that device
- See **Auto Mode** in the SoundCheck Manual
- Click on the Arrow button to open the Hardware Editor or Self Test sequence

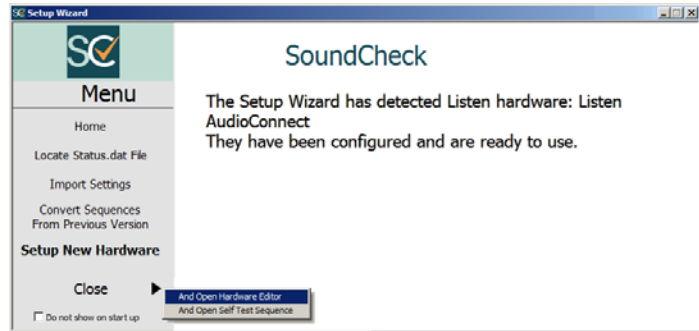


Figure 7: Setup New Hardware

Creating Sequences

A sequence tutorial is available in the main SoundCheck manual in the Sequence Editor Chapter. [See *Creating a New Sequence in the SoundCheck Manual*](#).

Calibration Procedure

Once the hardware for the system is setup, the next step in getting your SoundCheck system working is to calibrate the input and output signal paths.

Please refer to the Calibration chapter in the SoundCheck manual for information and instructions.

Contact the Listen office at 617-556-4104, Monday through Friday, between 9 AM and 5 PM EST.

or email:

Sales - sales@listeninc.com

Technical Support - support@listeninc.com

580 Harrison Ave, Suite 3W • Boston, MA 02118 • 617-556-4104 • Fax 617-556-4145 • www.listeninc.com

© Listen, Inc 2000 - 2016. All rights reserved.

SoundCheck[®], SoundCheck ONE[™], SoundMap[™], NoiseCheck[™], STWEEP[™], HarmonicTrak[™], SoundConnect[™], DC Connect[™], AmpConnect[™], AmpConnect ISC[™], AudioConnect[™], AudioConnect 4x4[™], SoundConnect 2[™] and SC Amp[™] are trademarks of Listen, Inc.

® Microsoft, Windows 7, Windows 10 are registered trademarks of Microsoft Corporation.

Mac[®], Mac OS[®] are registered trademarks of Apple Inc.

Rev Date 090216 D