

Requirements

Important! Do not unplug the hardware key while SoundCheck is running. Doing so could destroy the hardware key.

You will need:

- a Installation disk or link to download software from website (included in email with status.dat file)
- b Your status.dat file saved on your computer or network (sent by email to the SoundCheck license holder). Contact support@listeninc.com if you need this re-sent to you.
- c Your hardware key (shipped with software)



Windows: SoundCheck 18 is only available as a 64-bit application. It requires a 64-bit version of Windows. It cannot be installed on a 32-bit version of Windows. See **Quick Start Guide Windows**.

macOS: macOS version 10.13.6 or later is required. See **Quick Start Guide macOS**.

See “**Installing SoundCheck on macOS 10.15 Catalina**” in the SoundCheck manual.

Software Installation

1. Close all running applications before installation. We recommend that antivirus software is temporarily disabled during the installation process.
2. Insert the included hardware key into the USB port of the computer before starting the SoundCheck installation process. The computer will recognize the new hardware key as the driver is included in the software installation.
3. Install the software. If it was downloaded from our website, double click the Setup.exe file. If using the DVD, allow the disk to auto-run and follow prompts (you may be prompted to run Launch.exe).

Please note that for first time installations, LabVIEW Run Time (*LabVIEW 2018*) is required as part of the installation process. **This will install automatically, but will require a computer reboot before SoundCheck is installed.** The SoundCheck installation will resume automatically after reboot.

4. Follow the prompts for:
 - Welcome Screen
 - License Agreement
 - Installation Location Prompt

Demo Version

The SoundCheck Demo Viewer can be installed without the hardware key.

The Demo Viewer is not available on macOS.

The Demo Viewer is installed along with the full version of SoundCheck. Shortcuts are created on the desktop.

All data generated in the demo viewer is randomly adjusted in level, Randomized, and is therefore not valid.

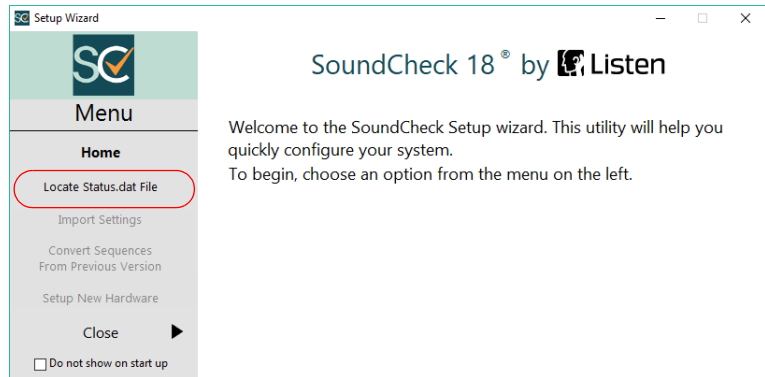
- Recall, save and print data is randomized
- Create and modify test sequence but Save sequence is disabled
- 2 channels of input/output hardware channels
- All other functionality of SoundCheck is available.

See [SoundCheck Demo Viewer in the SoundCheck Manual](#) for additional information.

Continue to next page

5. Open SoundCheck. It will initially open in Demo Mode and the main menu bar will display the message, “**Wrong Status.dat**”. Next you will link your status.dat file to the SoundCheck installation.

6. Open the **Setup Wizard**. It runs automatically at startup, or is launched by selecting **File> Setup Wizard** from the main SoundCheck menu.



7. Select **Locate Status.dat File** from the Setup Wizard Menu, and navigate to the location of your system’s unique status.dat file. If you have multiple systems, ensure that you select the status.dat file whose number matches the hardware key you have installed. Select the file or choose directory and exit the Setup Wizard.

8. Select **Import Settings** if you want to import Preferences or Hardware and Calibration settings from a previous version of SoundCheck.

If you are setting up a new audio interface for the first time, please import settings after you have finished the audio interface setup.

9. Select **Convert Sequences From Previous Version** if you want to open the conversion utility.

(Typically used for SoundCheck 13 and earlier)

10. Close the Quick Launch Menu.

The main screen will no longer show **Demo Mode** or the “Wrong Status.dat” message. Your software is installed.

Problems or Questions?

We’re here to help you. Listen technical support is available from 8 AM to 5 PM EST. Outside these hours please contact you local rep for support.

Ph: 617-556-4104 ext 200

Email: support@listeninc.com

Please visit support.listeninc.com and click on Knowledgebase

Important: It is critical that you backup your SoundCheck folder on a regular basis. A backup should always be made prior to installing a new version or update to SoundCheck.

Next: Please proceed to the quick start guide for your audio interface.

Ph 617-556-4104 • www.listeninc.com • support@listeninc.com
© Listen, Inc 2020. All rights reserved. SoundCheck® is a registered trademark of Listen, Inc.
REV 012920