

## Software Installation

**Important!** Do not unplug the hardware key while SoundCheck is running. Doing so could destroy the hardware key.

You will need:

- a Installation disk or link to download software from website (included in email with status.dat file)
- b Your status.dat file saved on your computer or network (sent by email to the SoundCheck license holder). Contact [support@listeninc.com](mailto:support@listeninc.com) if you need this re-sent to you.
- c Your hardware key (shipped with software)



1. Close all running applications before installation. We recommend that antivirus software is temporarily disabled during the installation process.

2. Install the software. If it was downloaded from our website, double click the Setup.exe file. If using the DVD, allow the disk to auto-run and follow prompts (you may be prompted to run Launch.exe). Please note that for first time installations, LabVIEW Run Time (*LabVIEW 2016*) is required as part of the installation process. **This will install automatically, but will require a computer reboot before SoundCheck is installed.** The SoundCheck installation will resume automatically after reboot.

3. Follow the prompts for:

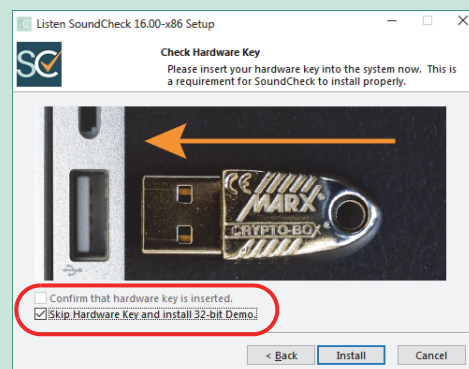
- Device Driver Installation Wizard
- SoundCheck 16.0 Setup Wizard
- License Agreement
- Installation Location
- Check Hardware Key – during this process, insert the SoundCheck hardware key into the USB port of the computer when prompted; it should be automatically recognized. Confirm that the hardware key is present, and select **Install** to finish the installation.

### Demo Version

The demo version of SoundCheck (can also be used as a data viewer) can be installed without the hardware key. Please be aware that all data *generated* in the demo version is randomly adjusted in level and is therefore not valid.

Note: The demo version is only available in the SoundCheck 32 bit installer. It cannot be installed from the 64 bit installation. Download the SoundCheck 32 bit installer from the website or select the 32 bit installer from the DVD menu.

Follow the installation prompts as far as the Check Hardware Key screen. Here, select “Skip Hardware Key and install 32-bit Demo” as shown below.

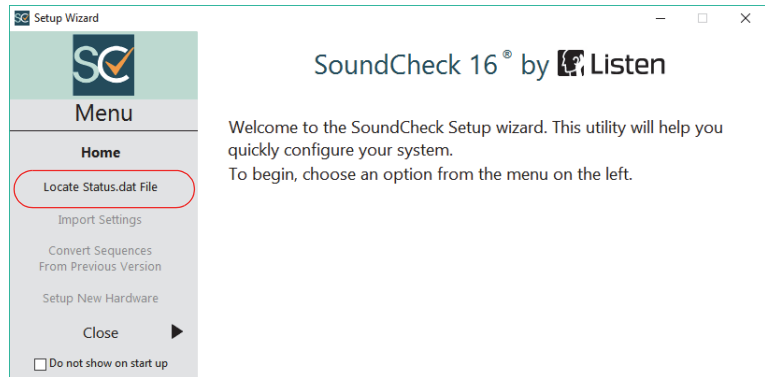


See [Demo Version in the SoundCheck Manual](#) for additional information.

Continue to next page

4. Open SoundCheck. It will initially open in Demo Mode and the main menu bar will display the message, “**Wrong Status.dat**”. Next you will link your status.dat file to the SoundCheck installation.

5. Open the **Setup Wizard**. It runs automatically at startup, or is launched by selecting **File> Setup Wizard** from the main SoundCheck menu.



6. Select **Locate Status.dat File** from the Setup Wizard Menu, and navigate to the location of your system’s unique status.dat file. If you have multiple systems, ensure that you select the status.dat file whose number matches the hardware key you have installed. Select the file, and exit the Setup Wizard.

7. Select **Import Settings** if you want to import Preferences or Hardware and Calibration settings from a previous version of SoundCheck.

If you are setting up a new audio interface for the first time, please import settings after you have finished the audio interface setup.

8. Select **Convert Sequences From Previous Version** if you want to open the conversion utility.

9. Close the Quick Start Menu.

The main screen will no longer show **Demo Mode** or the “Wrong Status.dat” message. Your software is installed.

#### Problems or Questions?

We’re here to help you. Listen technical support is available from 8 AM to 5 PM EST. Outside these hours please contact your local rep for support.

**Ph: 617-556-4104 ext 200**

**Email: support@listeninc.com**

Please visit our knowledgebase:

<https://support.listeninc.com/hc/en-us/categories/200130720-Knowledgebase>

**Next: Please proceed to the quick start guide for your audio interface.**