

AmpConnect 621 Installation

Important:

SoundCheck 18.1 or later is required. As of SoundCheck 18, NI Visa (required) is included in the macOS installer.

1. Connect AmpConnect 621 to the SoundCheck computer with the USB cable provided. Drivers are included with the installation of SoundCheck. We recommend that you start with a new installation of SoundCheck, connect AmpConnect 621 and power it on before opening SoundCheck. See “Automatically Create Signal Paths” below.
2. Open SoundCheck and open the Hardware Editor.
AmpConnect 621 is automatically recognized in the Hardware Editor as shown in [Figure 1](#). (“Automatically Create Signal Paths for Listen Devices” must be selected in SoundCheck Preferences > Launch.)

3. Select “Save” to close the editor.

“Automatically Create Signal Paths for Listen Devices”

This will automatically update AmpConnect 621 Vp levels and add signal paths in the Calibration Editor when SoundCheck opens. This is On by default but may be disabled in **Main Screen > Edit > Preferences > Launch**. (See SoundCheck manual).

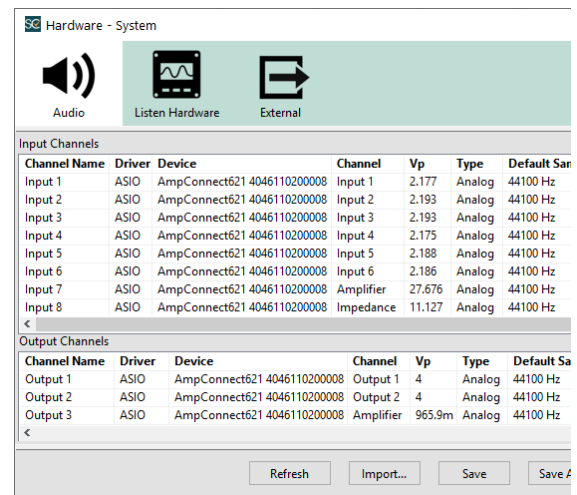



Figure 1: Hardware Editor

Self Test

The AmpConnect 621 Self Test sequence verifies that the interface is properly connected and working with SoundCheck.

4. From the SoundCheck Main Screen select: **File > Open > Sequences > Calibration > AmpConnect 621 Self Test.sqc**.

(Resize or move the sequence note PDF.)

5. Select the Green Arrow  to run the sequence. The sequence runs for approximately 40 seconds, and verifies that AmpConnect is connected and working properly.

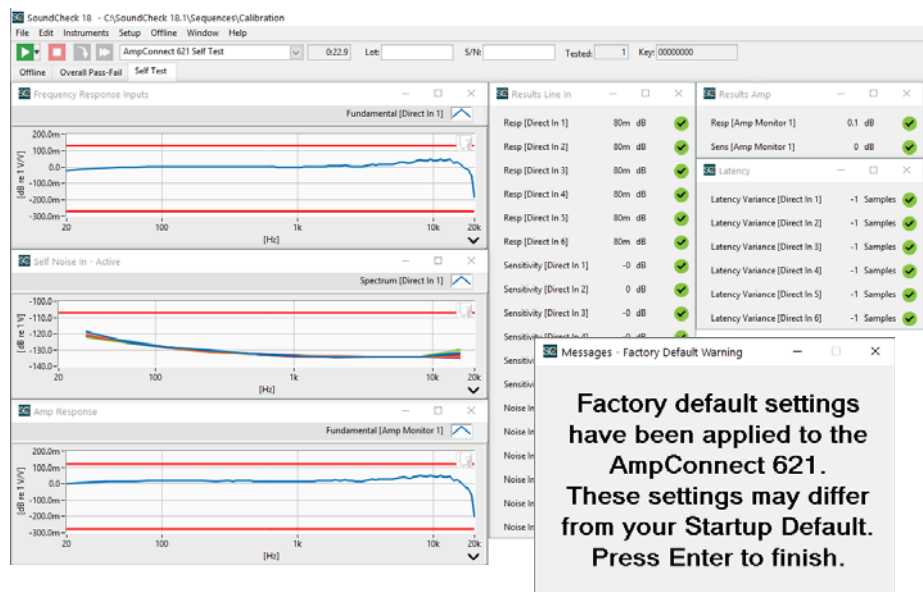


Figure 2: Self Test Display

At the end of the sequence, AmpConnect 621 is switched back to the factory default settings as noted in [Complete Loudspeaker Test Example Sequence on page 2](#).

Continue to next page

Microphone Setup

1. The default reference microphone in SoundCheck is Listen's SCM 3. The default SCM sensitivity is used in the Calibration Editor. For more accurate results you can calibrate the SCM 3 according to the **Microphone Calibration Procedure** in the SoundCheck Instruction Manual.
2. If you are using a different microphone you will need to change the Reference Microphone selection in the Calibration Editor (Setup > Calibration) and calibrate the microphone according to the **Microphone Calibration Procedure** in the SoundCheck Instruction Manual.

You are now ready to begin testing.

Complete Loudspeaker Test Example Sequence

Listen provides sample sequences to get you up and running quickly. This complete loudspeaker test enables you to run a basic level speaker test.

1. Open the Complete Test example sequence:

File > Open > Sequences > Loudspeakers > Complete test using AmpConnect 621.sqc.

Complete Test Setup

2. Connect the SCM microphone to **BNC Input 1**.

Note that a Microdot to BNC Adapter is required.

3. Connect the Loudspeaker (Device Under Test) to the Amplifier **Output A** binding posts

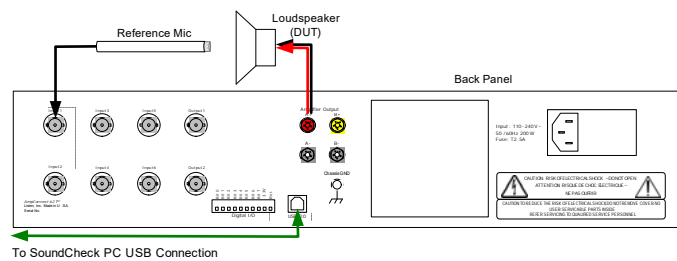


Figure 3: Complete Test Wiring

4. Run the test sequence and make adjustments to the sequence settings (in Setup > Sequence) for the specific device under test. Refer to the SoundCheck Instruction Manual for sequence editing instructions.

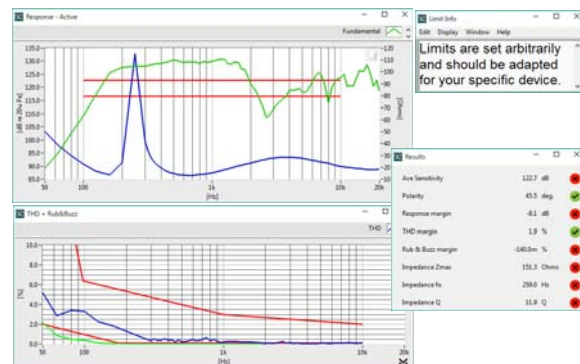


Figure 4: Complete Test Display