

AmpConnect ISC Installation

Important: As of SoundCheck 18, NI Visa is included in the macOS installer.

1. Connect AmpConnect ISC to the SoundCheck computer with the USB cable provided. Drivers are included with the installation of SoundCheck. We recommend that you start with a new installation of SoundCheck, connect AmpConnect ISC and power it on before opening SoundCheck. See **"Automatically Create Signal Paths"** below.
2. Open SoundCheck. The Setup Wizard will open and automatically recognize the AmpConnect ISC as shown in [Figure 1](#).
3. Select **"Setup New Hardware"** in the Setup Wizard. Select the expand button ► to the right of "Close" and select **"And Open Hardware Editor"**.
4. Click **Refresh**. Verify that the AmpConnect ISC values have been loaded in the Hardware Editor as shown in [Figure 2](#).

Select **"Cancel"** to close the editor.

"Automatically Create Signal Paths for Listen Devices"

This will automatically update AmpConnect Vp levels and add signal paths in the Calibration Editor when SoundCheck opens. This is On by default but may be disabled in **Main Screen > Edit > Preferences > Launch**. (See SoundCheck manual).

Note: AmpConnect ISC only uses WDM drivers. It is not compatible with WASAPI.

Self Test

The AmpConnect Self Test sequence verifies that the interface is properly connected and working with SoundCheck.

5. From the SoundCheck Main Screen select: **File > Open > Sequences > Calibration > AmpConnect Self Test.sqc**. SoundCheck opens the Calibration directory by default on the initial sequence selection.

(You may need to resize or move the sequence documentation PDF window if it covers the SoundCheck window.)

6. Select the Green Arrow ► to run the sequence. The sequence runs for approximately 40 seconds, and verifies that AmpConnect is connected and working properly.

At the end of the sequence, AmpConnect ISC is switched back to the factory default settings as noted in [Complete Loudspeaker Test Example Sequence on page 2](#).

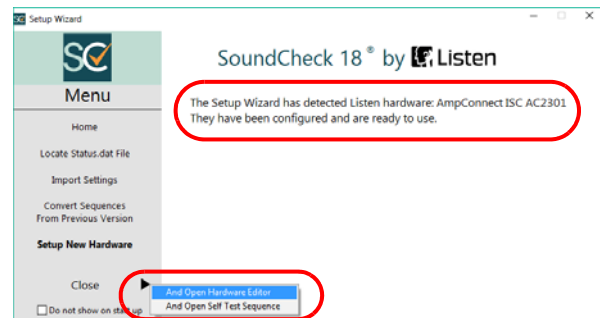


Figure 1: Setup Wizard

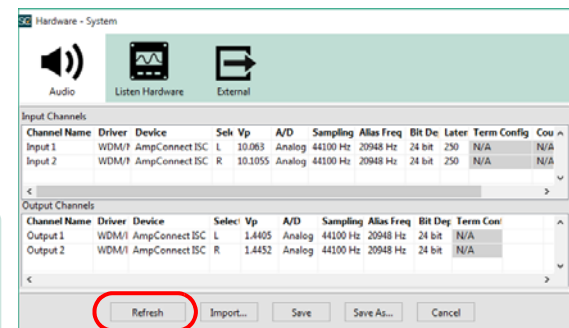


Figure 2: Hardware Editor

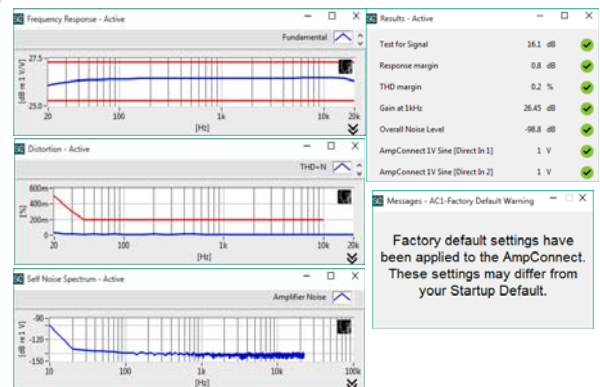


Figure 3: Self Test Display

Continue to next page

Microphone Setup

1. The default reference microphone in SoundCheck is Listen's SCM 3. The default SCM sensitivity is used in the Calibration Editor. For more accurate results you can calibrate the SCM 3 according to the **Microphone Calibration Procedure** in the SoundCheck Instruction Manual.
2. If you are using a different microphone you will need to change the Reference Microphone selection in the Calibration Editor (Setup > Calibration) and calibrate the microphone according to the **Microphone Calibration Procedure** in the SoundCheck Instruction Manual.

You are now ready to begin testing.

Complete Loudspeaker Test Example Sequence

Listen provides sample sequences to get you up and running quickly. This complete loudspeaker test enables you to run a basic level speaker test.

1. Open the Complete Test example sequence:

File > Open > Sequences > Loudspeakers > Complete test using AmpConnect.sqc.

Complete Test Setup

2. Connect the SCM microphone to the **Reference BNC input**

Note that a Microdot to BNC Adapter is required.

3. Connect the Loudspeaker (Device Under Test) to the Amplifier **Output A** binding posts
4. Run the test sequence and make adjustments to the sequence settings (in Setup > Sequence) for the specific device under test. Refer to the SoundCheck Instruction Manual for sequence editing instructions.

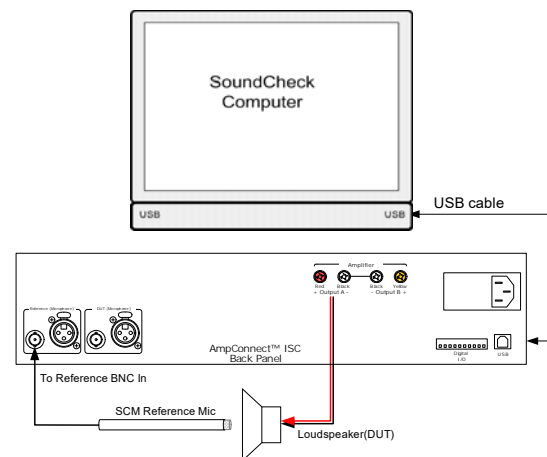


Figure 4: Complete Test Wiring

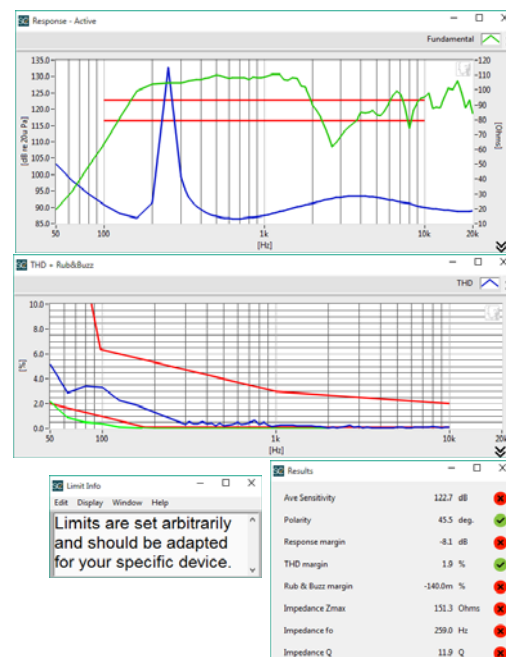


Figure 5: Complete Test Display